

# Expositio IV — From Worldly Anxiety to Trusting Peace

Understanding Divine Providence is not merely an intellectual exercise; it profoundly impacts our inner life. This section explores how a firm grasp of God's overarching governance transforms worldly anxiety into a deep, abiding peace.

## Worldly Anxiety

Rooted in the illusion of absolute human control over an uncertain future, leading to perpetual worry and fear of unforeseen challenges.

## Trusting Peace

Born from the conviction that God is in sovereign control, turning our focus from our limited capabilities to His infinite wisdom and benevolent will.

## The Great Shift

A shift from frantic self-reliance to serene surrender, allowing us to rest in the confidence that all things work for good under His design.

This perspective frees us from the burden of hyper-vigilance and empowers us to live with greater equanimity and purpose.





## Plain Thesis

Because God governs all things by fatherly Providence and directs every event toward its proper end, the Christian must reject worldly anxiety and live in trusting peace under God's wisdom.



## Aim and Importance: Doctrinal Foundation

This Expositio brings the doctrine of Providence into the interior life of the believer. It prevents the errors of:

### Worldly Care

The anxious belief that life depends entirely upon human control and personal effort.

### Practical Atheism

Living as though God were absent from daily events, rendering His power irrelevant.

### Despair or Restlessness

Interpreting suffering as meaningless and purposeless, rather than providential.

Without this transformation of the soul, the doctrine of Providence remains theoretical rather than spiritual. Its purpose is not only to explain history but to free the heart from anxiety and teach it to trust the Father's benevolent governance.

# Core Definitions

## Worldly Care

An anxious attachment to earthly outcomes rooted in the belief that success, security, or meaning depend primarily on human effort.

*Teaching Line: Worldly care begins when man forgets he lives under Providence.*

## Trust in Providence

The virtue by which a person confidently entrusts life, events, and outcomes to God's wisdom and governance.

*Teaching Line: Trust does not eliminate effort; it removes anxiety.*

## Filial Confidence

The peace of soul that arises when a believer lives as a child under the loving care of the Heavenly Father.

*Teaching Line: The Christian lives not as an orphan but as a child guided by God.*



## A — Intellect (Clarification)

The proper response to Divine Providence is not anxious control but trusting cooperation with God's fatherly governance.



# Doctrinal Explanation

Christ directly addressed worldly anxiety in the Sermon on the Mount: **“Do not be anxious about your life... seek first the Kingdom of God.” (Matt. 6:25–34)** This command is not merely moral advice; it flows directly from the doctrine of Providence.

## The Future is Not Random

If God governs all things, then the future is not a chaotic series of random events but is purposefully directed.

## Our Lives Are Not Abandoned

We are not left to fend for ourselves in an indifferent universe; divine care encompasses every aspect of our existence.

## Events Under Divine Wisdom

Even the circumstances we fear are already known and integrated into God’s benevolent and omniscient plan.

Therefore, anxiety rooted in the illusion of total self-control is a fundamental misunderstanding of reality. The Christian life does not reject effort or responsibility. Rather, it distinguishes between:

- Human cooperation, which is necessary, and
- Anxious self-reliance, which denies Providence.

Thus, the believer works diligently but entrusts outcomes to God, finding peace in His ultimate control.

# Necessary Distinctions

To fully embrace trusting peace, it is crucial to clarify what Divine Providence implies and what it does not, preventing common misconceptions.

## Trust vs. Passivity

Trusting Providence does not mean refusing to act. It means acting with diligence and prudence, but **without anxiety over the results**, knowing God is at work.

## Peace vs. Indifference

Christian peace is not apathy or detachment from suffering. It is a profound **confidence in God's benevolent governance**, even amidst trials, which allows for serene engagement.

## Responsibility vs. Control

We are indeed **responsible for our actions and efforts**, but we are not tasked with controlling every outcome or manipulating circumstances to achieve our desired ends. That belongs to God.



## Clarification of Errors

Understanding Divine Providence requires dispelling common misunderstandings that can hinder our trust and peace.

### Providence does not eliminate effort.

God works through secondary causes; our diligence and prudent action are part of His plan, not a denial of it.

### Trust does not mean passivity.

Authentic trust in God inspires courageous action and humble cooperation, not a lazy waiting for miracles.

### Peace does not require perfect circumstances.

The peace of soul derived from Providence is an inner disposition, independent of external trials or the predictability of life.

The soul rests not because life is predictable, but because God governs it with perfect wisdom and love.



## B — Imagination (Illumination)

Imagine a small child walking through a crowded city street, holding his father's hand. The child doesn't grasp the traffic or the dangers, yet walks peacefully, trusting the one who guides him. He doesn't need to know every detail of the journey; it's enough that his father knows.

So it is with Divine Providence. The Christian often cannot see the full meaning of events, delays, or trials. Yet, they walk under the guidance of a Father who sees the entire path.

### The Child and The Father: A Lesson in Trust

- The child does not control the journey.
- The child does not understand every turn.
- The child remains peaceful because he trusts his father.
- Likewise, the Christian does not see the full plan of Providence, yet walks confidently because the Father governs the path.



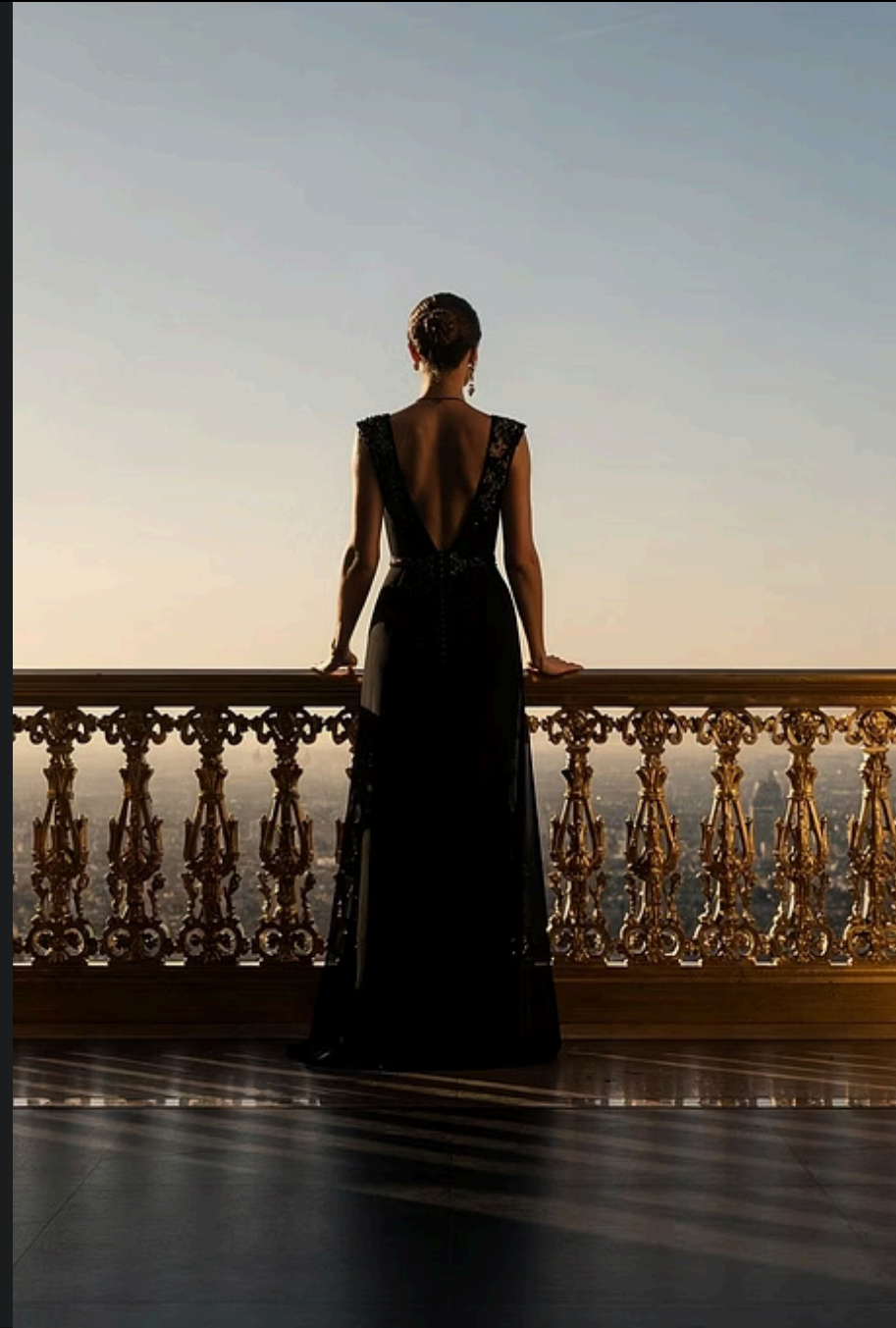
## C — Formation (Judgment / Will)

### Moral Judgment

Worldly anxiety arises when the soul forgets that God governs all things. To live as though everything depends on personal control is exhausting and contrary to reality.

## Spiritual Implication: Trusting Peace

Trust in Providence **produces peace** because it **places the future in God's hands** rather than our own limited understanding. Even uncertainty becomes bearable when it is seen as part of God's fatherly guidance.





## Practical Orientation

01

---

### Face Uncertainty with Faith

When facing uncertainty, remember that God governs outcomes beyond your immediate knowledge, guiding all things to their appointed end.

03

---

### Diligent Action, Surrendered Results

Perform your duties faithfully and with diligence, while surrendering the ultimate results and timing to divine Providence.

02

---

### Entrust to God's Will

When anxiety arises, consciously entrust the situation to God's benevolent will, releasing the illusion of total personal control.

04

---

### Trials as Opportunities

Interpret trials and difficulties not as meaningless setbacks, but as profound opportunities for spiritual growth and sanctification within God's plan.

## 5. Example (Primary Analogy)

### Christ Calming the Storm (Mark 4:35–41)

The disciples feared for their lives when a violent storm struck their boat. Yet Christ, the Lord of creation, was present with them. Their anxiety arose because they focused on the storm rather than on the One who governed the sea.

When Christ calmed the waters, He asked: *“Why are you afraid? Have you still no faith?”*

- 📌 **Explicit Teaching Point:** Fear arises when we focus on circumstances rather than God's governance. Trust arises when we remember that the Lord who governs creation is present with us in every storm.





# Common Errors Prevented by Divine Providence

Embracing the doctrine of Divine Providence actively safeguards against several common errors that undermine true peace and right action.

## Anxious Self-Reliance

Life does not depend solely on human control but rests securely under God's loving and omnipotent Providence, freeing us from overwhelming anxiety.

## Practical Atheism

God is not absent or detached from daily life; His active governance extends to every event, both great and small, revealing His constant presence.

## Passive Fatalism

Genuine trust in Providence requires our diligent cooperation and faithful action, understanding that we are instruments in God's wise plan, not spectators.



## Practical Consequences for Students

Embracing Divine Providence transforms a student's approach to academic life, fostering peace and purposeful action.

- 1 Language of Providence**  
Replace thinking in terms of mere chance or luck with the understanding that God's purposeful hand is at work in every situation, big or small.
- 2 Trust Over Fear**  
Confront academic uncertainties, exam pressures, and future career anxieties with a profound trust in God's guiding plan, rather than succumbing to fear.
- 3 Prayerful Submission**  
Integrate prayer into your daily academic routine, offering up study plans, project outcomes, and even your grades to God's will.
- 4 Growth Through Hardship**  
View academic challenges, failures, or unexpected difficulties not as setbacks, but as opportunities for spiritual and intellectual growth, part of God's perfect design.
- 5 Cultivate Inner Peace**  
Actively nurture interior serenity by constantly recalling that an all-wise and loving God governs all things, allowing you to study and live without overwhelming anxiety.



# Memoria

Because God governs every event by wise and fatherly Providence, the Christian must abandon anxious worldly care and walk in trusting peace under His guidance.